

# Biolumen

## Basic Control Unit Installation Guide

### Requirements

Hardware: Biolumen Basic Control Unit

Interface device (Windows Desktop, Laptop or Tablet)

Software: Windows XP or later

BioLumen Control user interface app

Drivers: Windows should have the correct drivers installed. However, on some Windows releases or following operating system updates, it may be necessary to re-install these – should this be necessary, the drivers can be downloaded from the BioLumen support website <https://www.tropicalmarinecentre.com/en/biosystems/resources>

**IMPORTANT:** The system does not require an internet connection to install or run the application once the Chrome app has been successfully installed.

Questions? Contact the support team at [info@biosystems-tmc.co.uk](mailto:info@biosystems-tmc.co.uk)

## System Set-up

1. Download and install the BioLumen control user interface app

- 1.1 Download the BioLumen App

[https://www.tropicalmarinecentre.com/sites/default/files/imce/biolumen\\_control\\_app.zip](https://www.tropicalmarinecentre.com/sites/default/files/imce/biolumen_control_app.zip)

OR

<https://www.tropicalmarinecentre.com/en/biosystems/resources>

- 1.2 Extract the contents of the zip file to a chosen location on the device to be used.

- 1.3 Create a desktop shortcut to the file 'Biolumen Control.html'.

2. Connect the controller to the interface device

- 2.1 Connect the controller to the device via USB

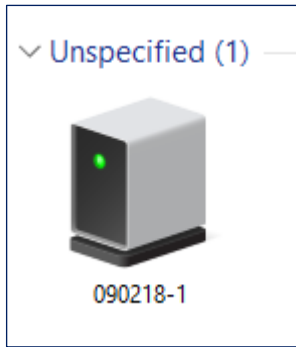
- 2.2 Identify the USB communication port [COM port] allocated to the controller by the Windows operating system

*Note: When the controller is first "paired" to a Windows interface device, the Windows operating system allocates a communications port [COM port] to it. You will need to know which port has been allocated to the controller before you can open the connection in the app.. To find the COM number for your device, follow the steps below.*

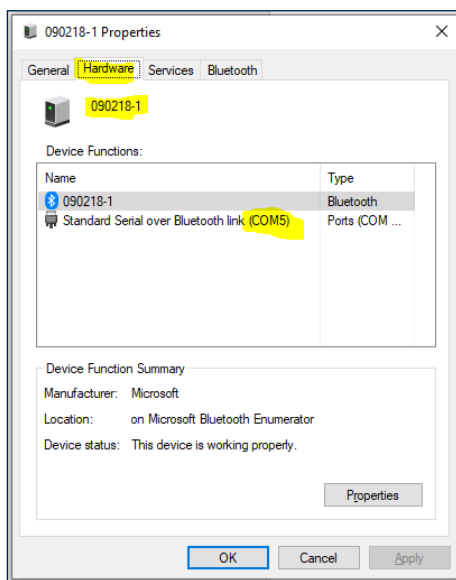
*IMPORTANT: The COM number will stay the same for each controller, provided the same Windows device is used to connect to that controller. However, if the same controller is connected to a different computer, this procedure will need to be repeated and the COM number may be different.*

*Questions? Email the support team at [enquiries@biosystems-tmc.co.uk](mailto:enquiries@biosystems-tmc.co.uk)*

- a. Navigate to the "Bluetooth & devices" menu
- b. Click 'view more devices'



- c. Select "Properties" then "Hardware" – this will confirm which COM port has been allocated– make a note of the number.

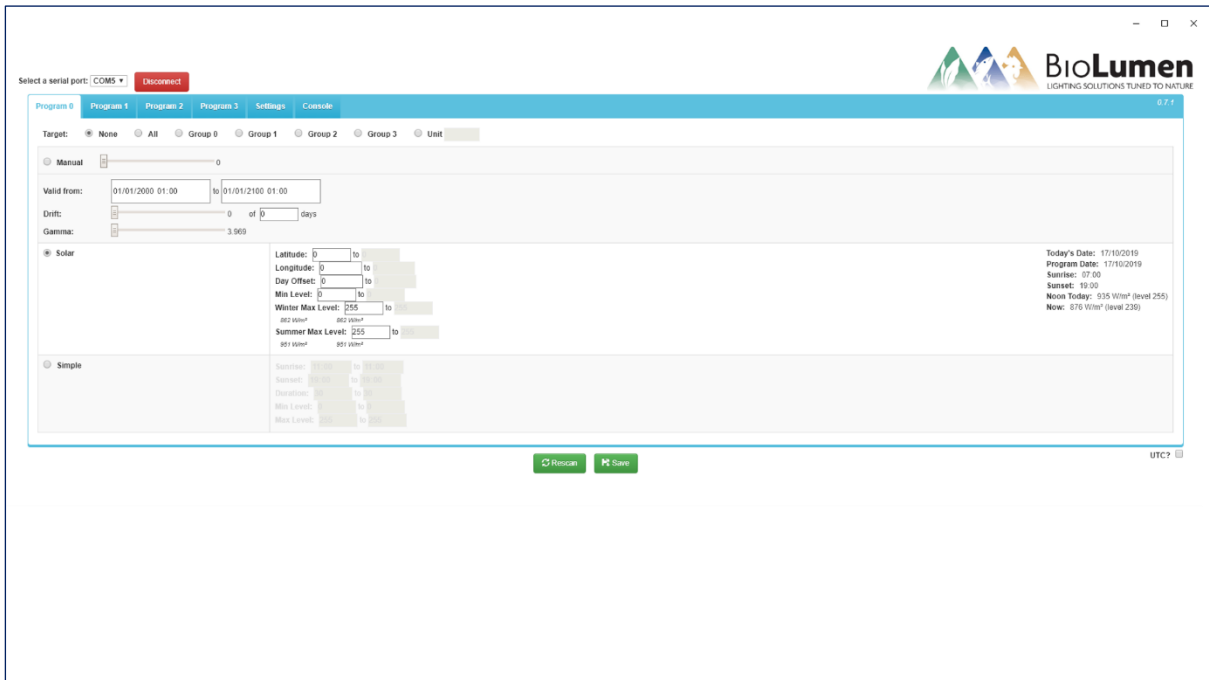


The Controller is now ready to be connected to the BioLumen user interface app.

3. Connect the controller to the BioLumen control user interface app
  - 3.1 Launch the Biolumen user interface app using the previously created desktop shortcut.
  - 3.2 Click 'Connect' in the top left. This will open a popup list of COM ports.
  - 3.3 Select the COM port found in step 2.

After a short pause, the "Connect" button will go red and change to "Disconnect"

3.4 Click "Rescan" – this will refresh the connection and update the system.



The BioLumen User Interface is now connected to the Biolumen Basic Control and ready to be configured.

For more details and explanations of the system functionality, please refer to the video tutorial library at <https://www.tropicalmarinecentre.com/en/biosystems/resources>.

## Questions?

You can reach the BioLumen support team by emailing [info@biosystems-tmc.co.uk](mailto:info@biosystems-tmc.co.uk)



**UK**  
Solesbridge Lane  
Chorleywood  
Hertfordshire  
WD3 5SX  
London

Call +44 01923 284151

**Iberia**  
Rua Cidade de Paris 6  
Parque Industrial do Arneiro  
2660-456 São Juliao do Tojal  
Portugal

Call +351 219 739 140

**biosystems-tmc.co.uk**

[info@biosystems-tmc.co.uk](mailto:info@biosystems-tmc.co.uk)

