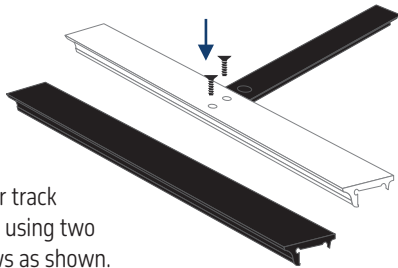


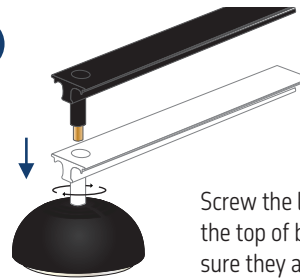
2xReef Photon

1



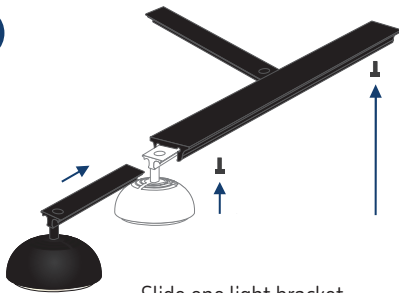
Attach T bar track to the T bar using two small screws as shown.

2



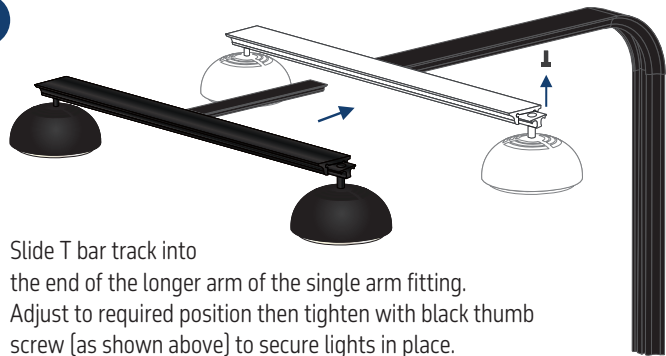
Screw the light bracket into the top of both lights, making sure they are securely attached.

3



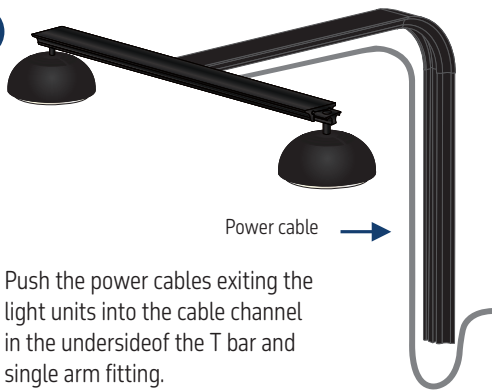
Slide one light bracket into each end of the T bar then tighten screws.

4



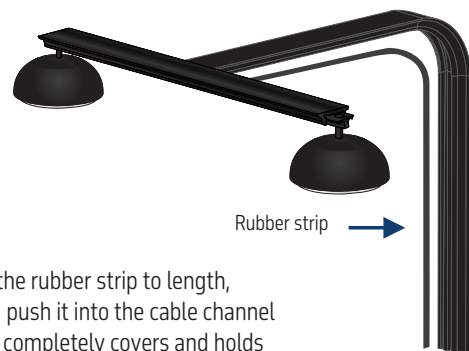
Slide T bar track into the end of the longer arm of the single arm fitting. Adjust to required position then tighten with black thumb screw (as shown above) to secure lights in place.

5



Push the power cables exiting the light units into the cable channel in the underside of the T bar and single arm fitting.

6



Cut the rubber strip to length, then push it into the cable channel so it completely covers and holds the power cable in place.

7



Slide the bottom of the single arm fitting into the arm mounting track and push the bottom section of power cable into the recess.

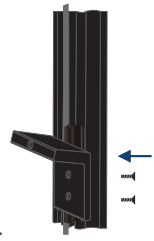
8

Align the holes in the back section of the tank mounting clamp with the holes in the arm mounting track and insert two small screws to secure.

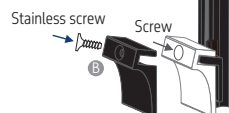


9

Insert two small screws from back of 90° arm fitting to secure in place.



10



Attach the front section of the tank mounting clamp to the back section using the screws as shown.

11

Slide the tank mounting clamp onto your tank rim and secure by turning the large screw.

