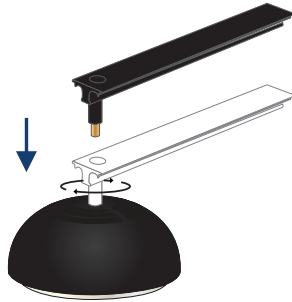


# Reef Photon

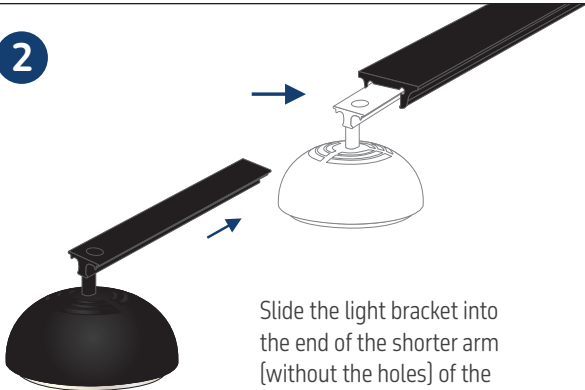
1

Screw the light bracket into the top of the light, making sure it is securely attached but do not over tighten.



2

Slide the light bracket into the end of the shorter arm (without the holes) of the 90° arm fitting.



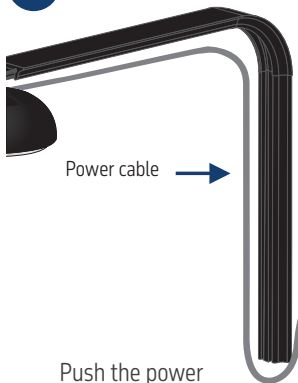
3



Adjust to required position then tighten with black thumb screw (as shown above) to secure in place.

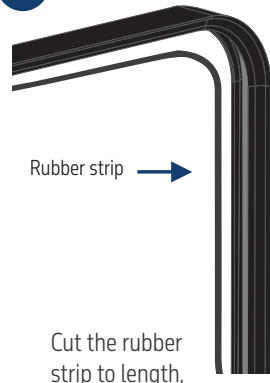
4

Push the power cable exiting the light unit into the cable channel in the underside of the 90° arm fitting.



5

Cut the rubber strip to length, then push it into the cable channel so it completely covers and holds the cable in place.



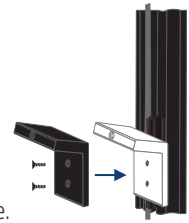
6

Slide the bottom of the single arm fitting into the arm mounting track and push the bottom section of power cable into the recess.



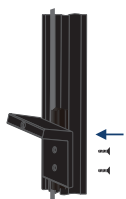
7

Align the holes in the back section of the tank mounting clamp with the holes in the arm mounting track and insert two small screws to secure.



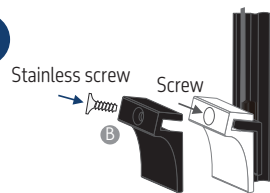
8

Insert two small screws from back of 90° arm fitting to secure in place.



9

Attach the front section of the tank mounting clamp to the back section using the screws as shown.



10

Slide the tank mounting clamp onto your tank rim and secure by turning the large screw.

